

470

KETTLES ROAD

40

DUBERKES ROAD

LANG LANG

74.9

ACRES*

117.5

ACRES*



470 & 40

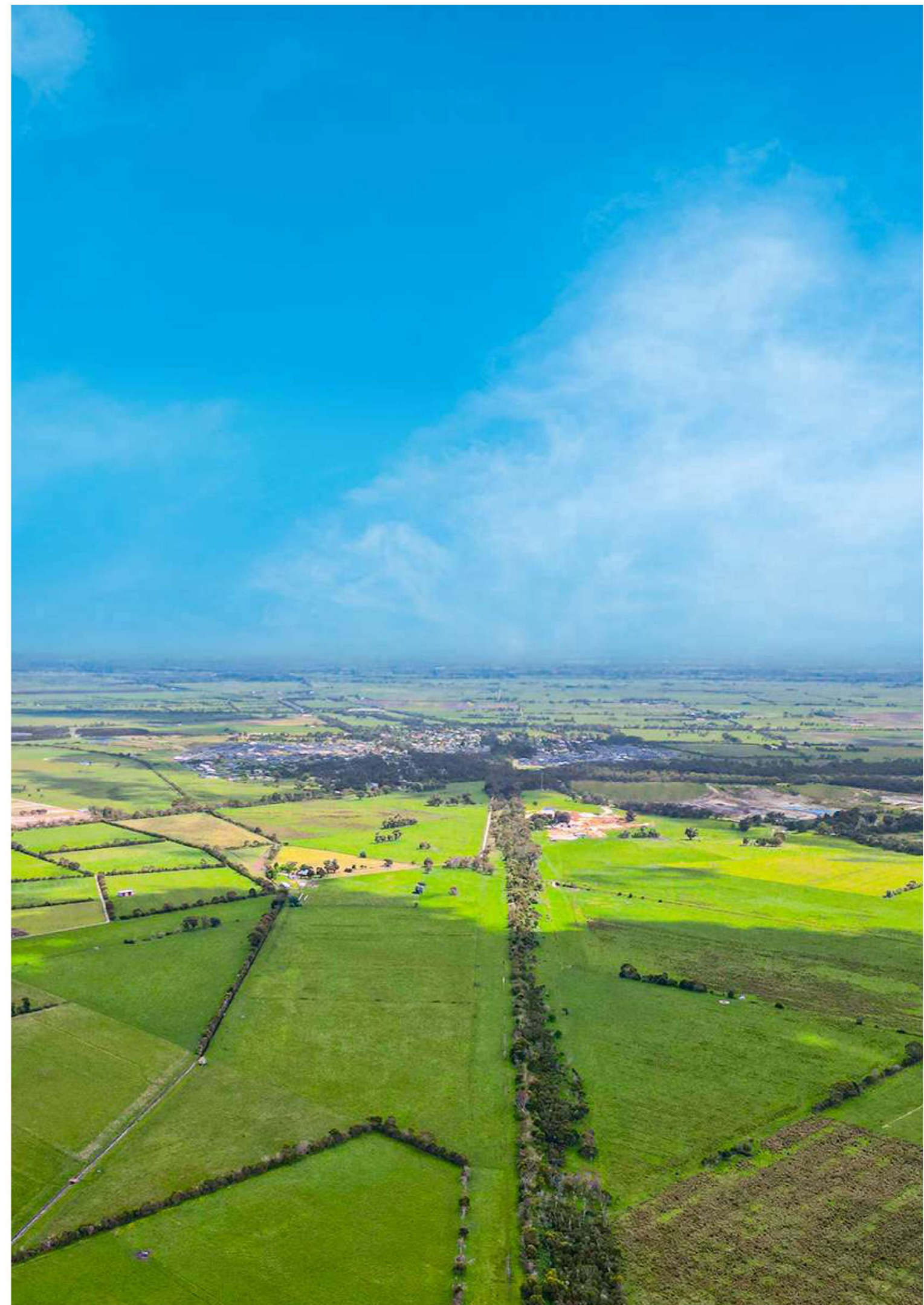
EXECUTIVE SUMMARY

<i>Property</i>	<i>Site Area</i>	<i>Method of Sale</i>
<i>470 Kettles Road & 40 Duberkes Road Lang Lang</i>	<i>30.33 Ha / 74.9 Acres 47.57 Ha / 117.5 Acres</i>	<i>Private Sale</i>

<i>Planning</i>	<i>Settlement Sale</i>
<i>The land is located inside Green Wedge Zone.</i>	<i>Flexible Terms Considered</i>

Site Details

*Crown Description: Allot. 79F PARISH OF LANG LANG & Allot. 79A PARISH OF LANG LANG
Standard Parcel Identifier (SPI): 79F\PP2968 & 79A\PP2968
Council Property Number: 4449150800 & 4243000100*



LOCATION

Lang Lang is a town in Victoria, Australia, 73 km south-east of Melbourne's Central Business District, located within the Shires of Bass Coast, Cardinia and South Gippsland local government areas.

- *2 Mins from Shops*
- *2 Mins from Lang Lang Primary School*
- *3 Mins from Iga*
- *3 Mins Lang Lang Community Centre*
- *7 Mins from Lang Lang Football Netball Club*

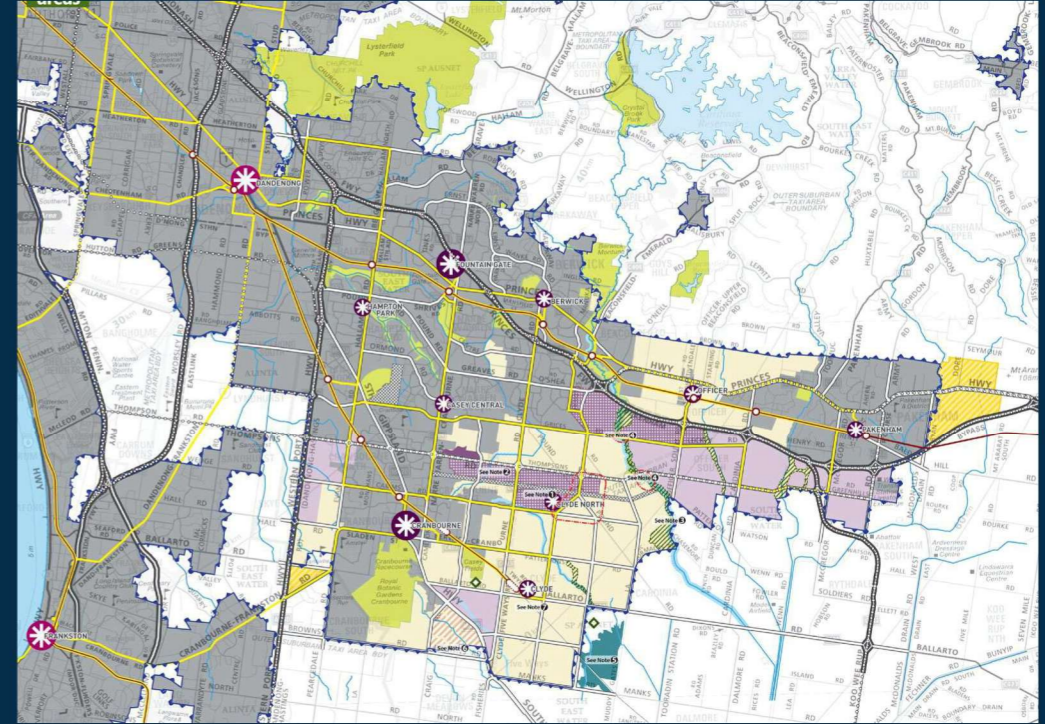


THE SOUTH EAST GROWTH CORRIDOR PLAN

Development of the South-East Growth Corridor will continue to enhance the region's self-sufficiency, sustainability and distinctiveness by providing a good range of new employment opportunities which are well-connected by appropriate transport links between homes and new and existing jobs.

New job opportunities will be provided at Pakenham, Thompsons Road and South Gippsland Highway, as well as in the existing and identified town centres and within new residential communities. Dandenong and the south eastern metropolitan suburbs will also continue to be a major focus for employment, services and facilities provision in the region.

The existing sense of place will be enhanced through the design of precincts enabling residents to enjoy access to a network of waterways, biodiversity corridors and open spaces, as well as providing ready access to vibrant town centres, local services and job opportunities. Opportunities to integrate the waterways, the Royal Botanic Gardens Cranbourne, local hills and views to more distant hills including the Dandenong Ranges, will be maximised.



EXCLUSIVE OFFER EARLY INVESTORS!

Offer price: \$66,900 per share

Note: Only 15 shares on offer at this stage

Standard price: \$83,700 per share

Contact Us

Muhammad Musa
0455688305

Mahmud Alam
0478131363

Email: info@nyma.com.au

Interested? Sign up here:

<https://www.nyma.com.au/contact-us>

ROI expected

15%+ p.a.

by project end



NYMA
GROUP